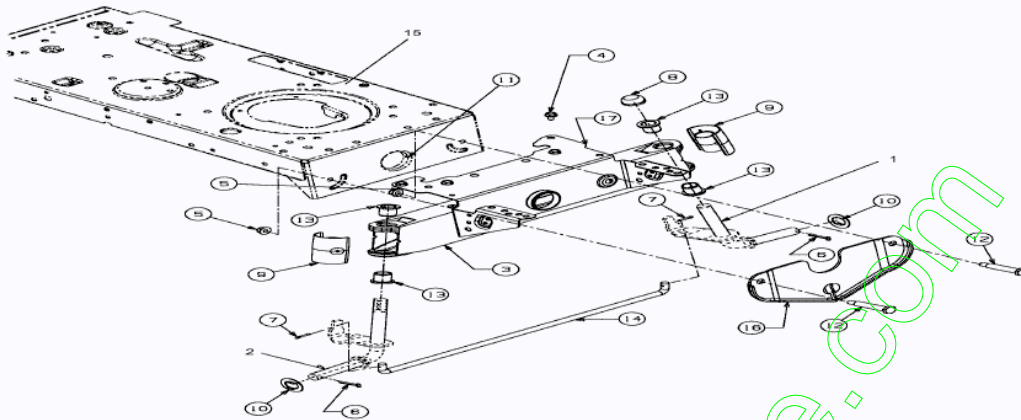


Position	Numéro de pièce	#	Appellation I	Appellation II
1	617-04024	1	SEGMENT DE DIRECTION CPL	FINISH:PHOS & OIL
2	710-0376	1	VIS HEX.:5/16- 18:1.00:GR5:STD	FINISH:MTD SPEC 701-01006
3	710-0643	1	VIS HEX.: 5/16-18:1.00:GR5	FINISH:MTD SPEC-100015
4	710-1309	1	VIS	FINISH:MTD SPEC-100015
5	710-3180	1	VIS HEX. 5/16- 18:1.75:GR5:STD	FINISH:SPEC-100015
6	712-0240	1	ECROU HEX.: 7/16-20:GR2	FINISH:MTD SPEC-100015
7	712-0262	1	ECROU	FINISH:MTD SPEC-100015
8	712-04063	4	ECROU HEX. AVEC FLANC	FINISH:MTD SPEC-100015
10	723-0448A	1	ROTULE DE DIRECTION 7/16-20	FINISH:MTD SPEC-100015
11	736-0242	1	RONDELLE CONIQUE.340X.872X.060	FINISH:MTD SPEC-100016
13	738-04141	1	AXE	FINISH:SPEC-100015
14	738-0919	1	ARBRE DE DIRECTION 21,57 LG	FINISH:SIEHE ZG.
15	741-04124	1	PALIER DE BRIDE	FINISH:PLAIN
16	741-0475	1	DOUILLE PLASTIQUE: 385 ID	NATUR ODER SCHWARZ 941-0475
17	747-04298	1	TRINGLE DE DIRECTION	FINISH:701-01007
18	748-0389	1	BAGUE	FINISH:GEÖLT
19	748-04065	1	PATTE DE DIRECTION	FINISH:748-04065ZW
20	748-04068	1	DOUILLE .71IDX.125 ODX.56 LG	FINISH:SPEC-100015
21	750-04418	1	DOUILLE .322ID.625ODX.21LG	FINISH:GEÖLT
22	783-04644	1	PLAQUE	FINISH:PHOS & OIL OR 701-01000

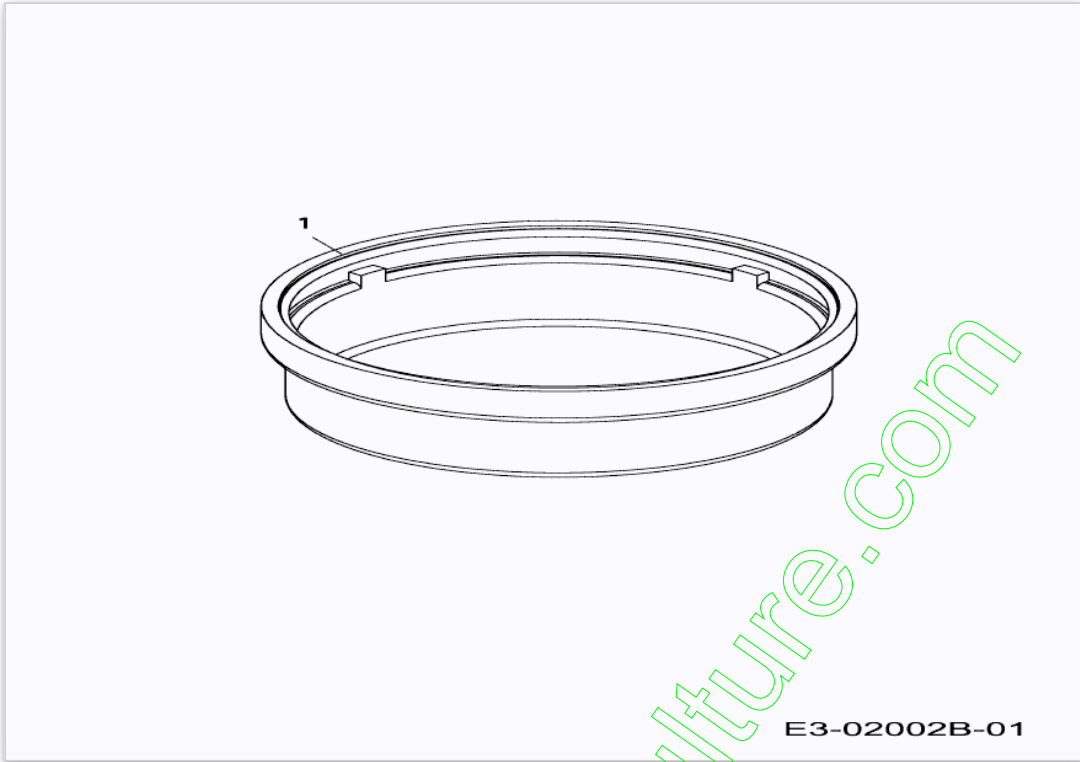
bis 28.02.2008
to 28.02.2008
jusqu'au 28.02.2008



E3-02702B-01

Position	Numéro de lapièce	#	Appellation I	Appellation II
1	638-04007	1	AXE AVANT GAUCHE	LT-5: SCHWEISST. 638-04007-0637
2	638-04008	1	AXE AVANT DROIT	638-04008-0637
3	683-0128B	1	BLECH-VORDERACHSE VOLLST:	SCHWEISSTEIL: 683-0128B-0637
4	710-0604A	4	VIS 5/16-18:0.625	FINISH: MTD SPEC-100016 TYPE 1
5	712-04065	2	ECROU HEXAGONAL	FINISH: SPEC-100015 912-04065
6	714-04039	2	EPINGLE	FINISH: PHOS & OIL
7	714-0474	2	GOUPILLE	FINISH: MTD SPEC-100015
8	726-0341	1	CAPUCHON CLIPS	FINISH: SCHWARZ
9	731-1291A	2	CARTER PLASTIQUE	MATERIAL: PP SCHWARZ: LT5
10	736-04228	2	RONDELLE	736-04228
11	737-3007	1	GRAISSE DUBOISE	LITHIUMFETT 25 kg Hobb
12	738-04128	2	VIS A EPAULE .500x2.38:3/8-16	FINISH: MTD SPEC-100015
13	741-0660A	4	BAGUE ESSIEU DE ROUE	FINISH: KUNSTSTOFF SCHWARZ
14	747-04299A	1	TRINGLE DE DIRECTION	FINISH: SPEC-100015 or E-Coat
15	783-04549	1	RAHMEN LT 5 UNTEN	FINISH: NONE
16	783-04568	1	PLAQUE AVANT	FINISH: LACKIERT
17	783-04601B	1	FINISH: LACKIERT	FINISH: LACKIERT

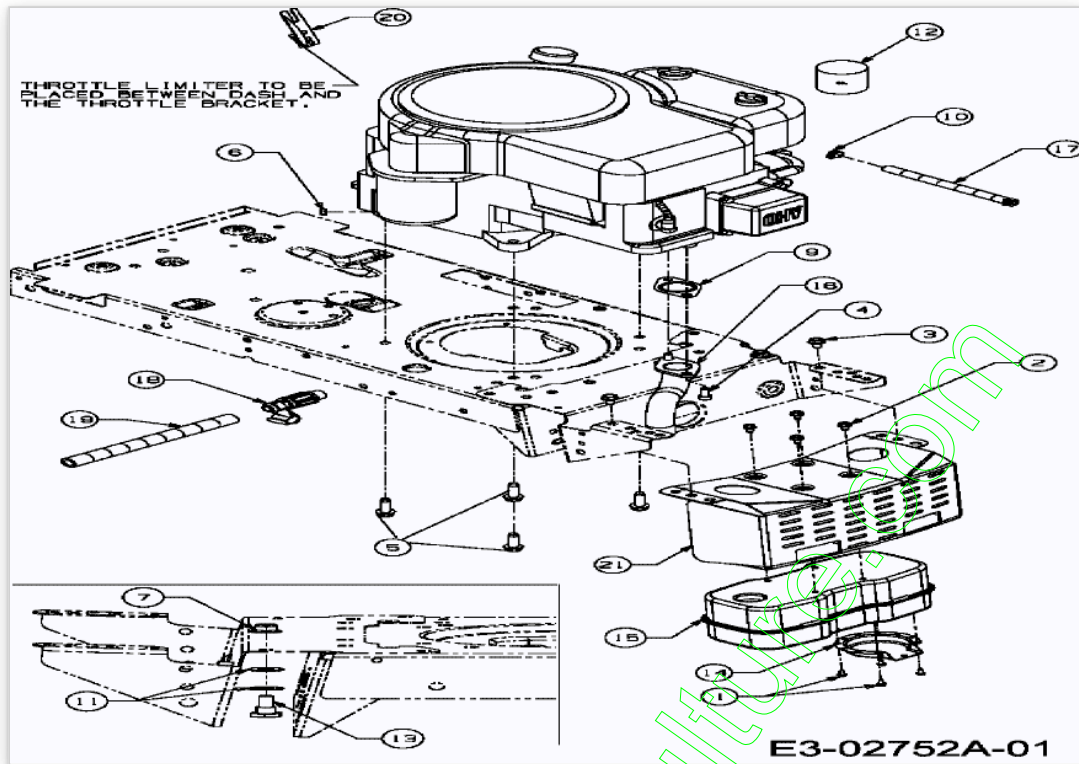
www.emc-motocultures.com



www.emc-motoculture.com

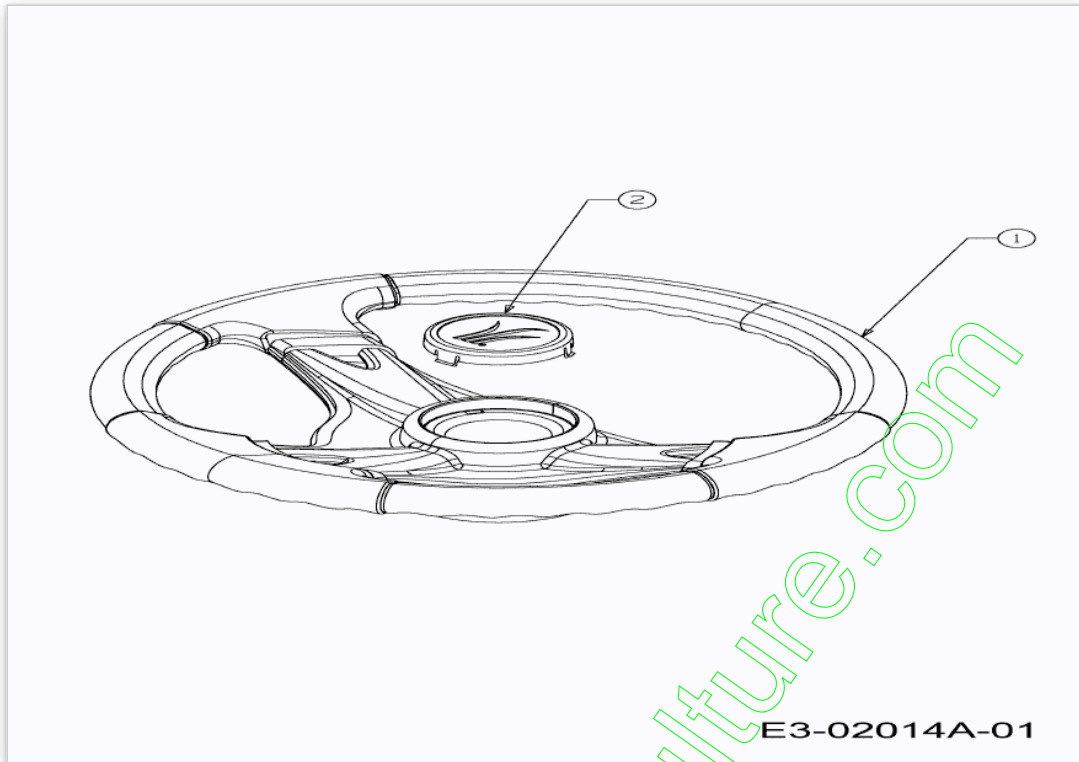
Position	Numéro de lapièce	#	Appellation I	Appellation II
1	731-0484A	2	ENJOLIVEUR DEVANT	KUNSTSTOFF SCHWARZ 931-0484A

www.emc-motoculture.com



www.emc-motocult.com

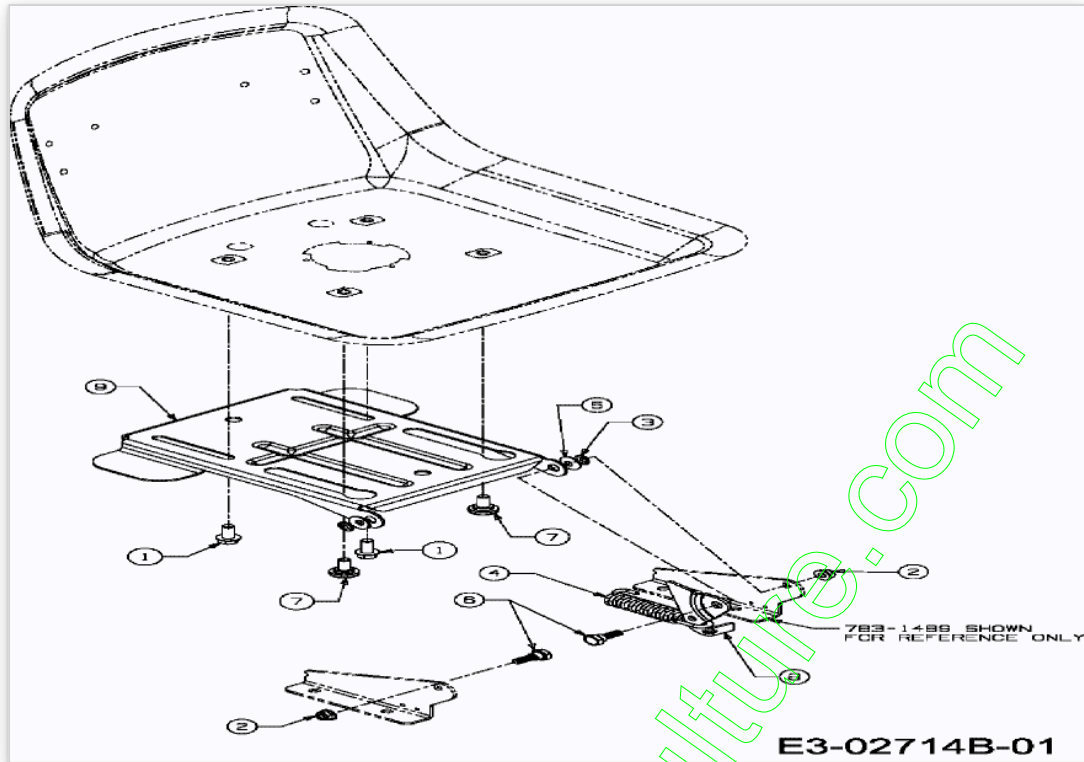
Position	Numéro de lapièce	#	Appellation I	Appellation II
1	710-0227	4	VIS	FINISH:MTD SPEC-100016 TYPE 1
2	710-0599	4	VIS A SIX PANS CREUX	FINISH:MTD SPEC-101617
3	710-0604A	2	VIS 5/16-18:0.625	FINISH:MTD SPEC-100016 TYPE 1
4	710-1314A	2	VIS HEX. INT. 5/16- 18:.75:GR8	FINISH: GM4435M CODE A
5	710-1315	4	VIS HEX.TT:3/8- 16:1.25:HXIN:S	FINISH:SPEC-100016 TYPE 1
6	712-0271	1	ECROU 1/4-20"+ DISQUE DENTE	FINISH:MTD SPEC-100016 GR5
7	712-04065	1	ECROU HEXAGONAL	FINISH:SPEC-100015 912-04065
9	721-0348	1	JOINT POUR COLLECTEUR	TECUMSEH OHV16HP
10	726-0205	2	COLLIER DE SERRAGE DE BOYAU	FINISH:PHOS UND GELB LACKIERT
11	736-0300	2	RONDELLE	FINISH:MTD SPEC-100015
12	737-0169	1	HUILE MOTEUR 20W/30	oder HD SAE20W/30 API:SF/CC
13	738-0143	1	VIS EPAULEE	FINISH:MTD SPEC 100015 (EU)
14	751-0564B	1	DEFLECTEUR ECHAPPEMENT	MATERIAL:ALUMINIERTER STAHL
15	751-0617B	1	POT D'ÜCHAPPEMENT	
16	751-0620A	1	COUDE D'ECHAPPEMENT	
17	751-0535	1	TUYAU ESSENCE NOIR	Ø12,7+/-5.84 / Ø6,35+/-0,41
18	751-10517	1	RACCORD DE VID. D'HUIL. AV. C.	951-10517
19	751-3141	1	TUYAU VIDANGE	13 X 3:FINISH KLAR METERWARE
20	783-05034A	1	783-08843	TEC/B&S VERZINKT!
21	783-0615D	1	DEFLECTEUR POT D'ECHAPPEMENT	FINISH:LACKIERT



www.emc-motoculture.com

Position	Numéro de lapièce	#	Appellation I	Appellation II
1	631-04028	1	VOLANT	FINISH SCHWARZ
2	731-04040	1	COUVERCLE DE VOLANT	Ò 60mm:KUNSTSTOFF SCHWARZ

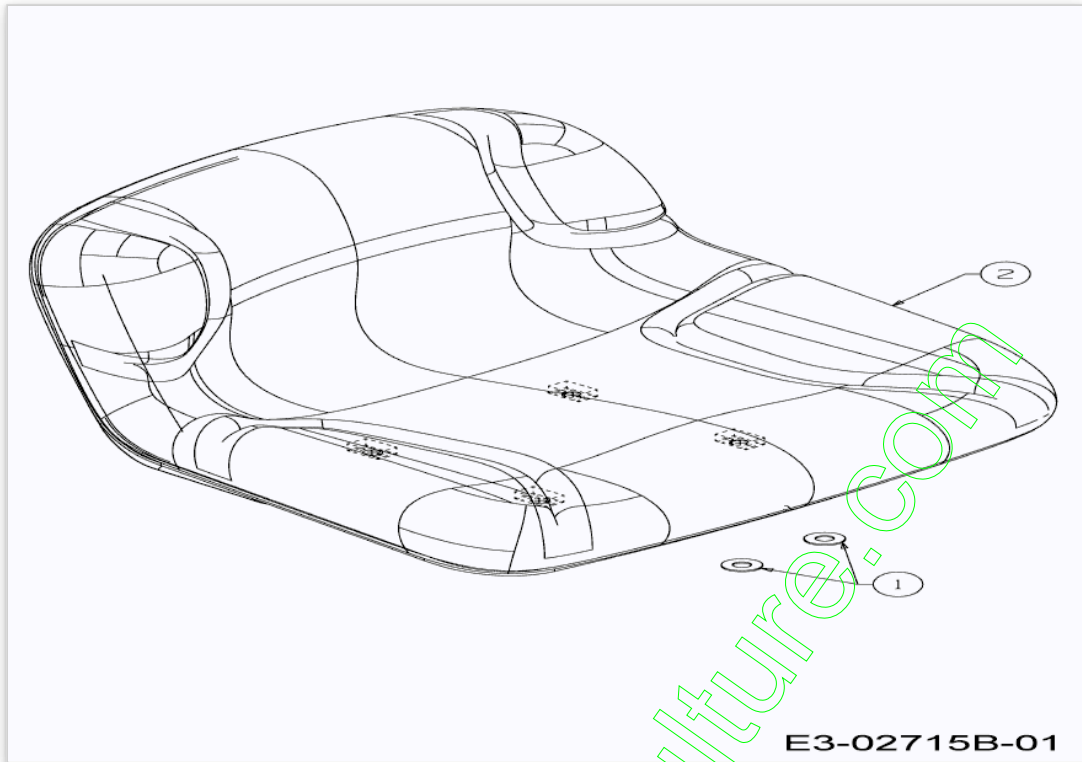
www.emc-motoculture.com



www.emc-motoculture.com

Position	Numéro de pièce	#	Appellation I	Appellation II
1	710-04482	2	VIS:3/8-16:.875:GR5:STD	FINISH:MTD SPEC-100015
2	712-04063	2	ECROU HEX. AVEC FLANC	FINISH:MTD SPEC-100015
3	726-0201	2	RONDELLE .3125 ID	MECHANISCH VERZINKT:SIEHE ZG.
4	732-1184	1	RESSORT	500er:FINISH:MTD STD 701-01000
5	736-0242	2	RONDELLE CONIQUE.340X.872X.060	FINISH:MTD SPEC-100016
6	738-0296	2	AXE EPAULE	FINISH:SPEC-100015
7	738-04012A	2	VIS EPAULEE	FINISH:SIEHE ZG.
8	783-0209D	1	SUPP. SIÈGE	FINISH:SPEC-100016
9	783-04081B	1	PLAQUE DE SIÈGE: NOIR	FINISH:LACKIERT

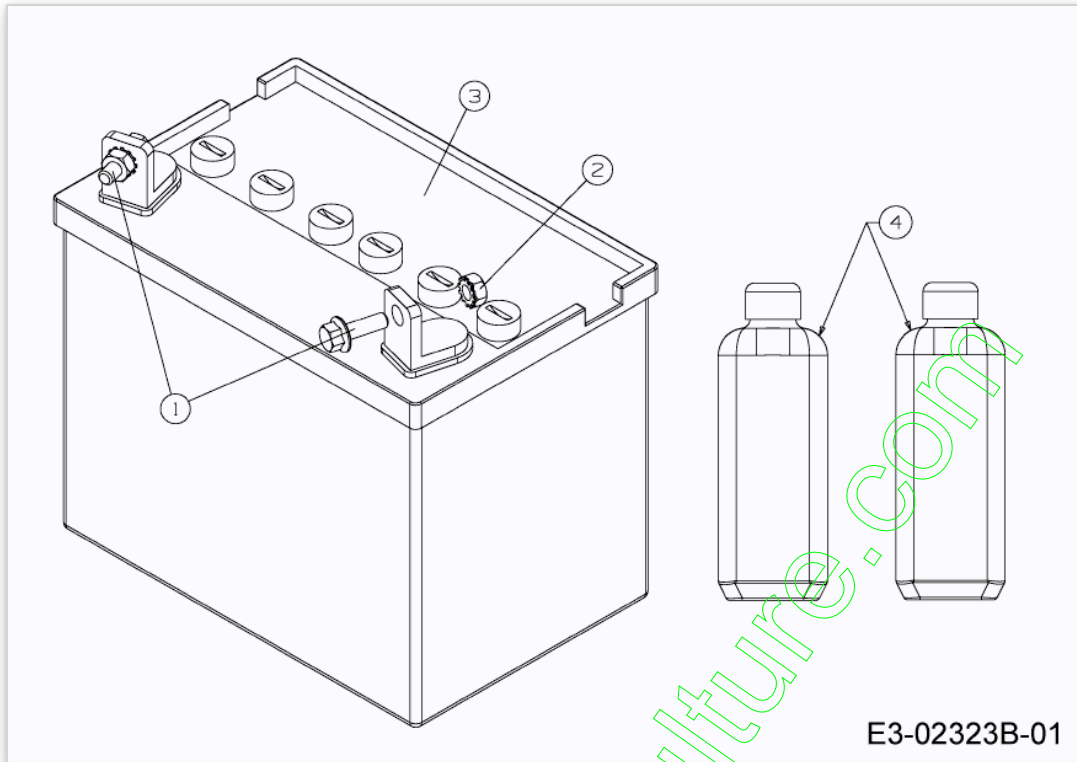
www.emc-motoculture.com



www.emc-motoculture.com

Position	Numéro de pièce	#	Appellation I	Appellation II
1	736-0300	2	RONDELLE	FINISH:MTD SPEC-100015
2	757-04037	1	SIÈGE:2400:DOSSIER MOYEN	SCHWARZ

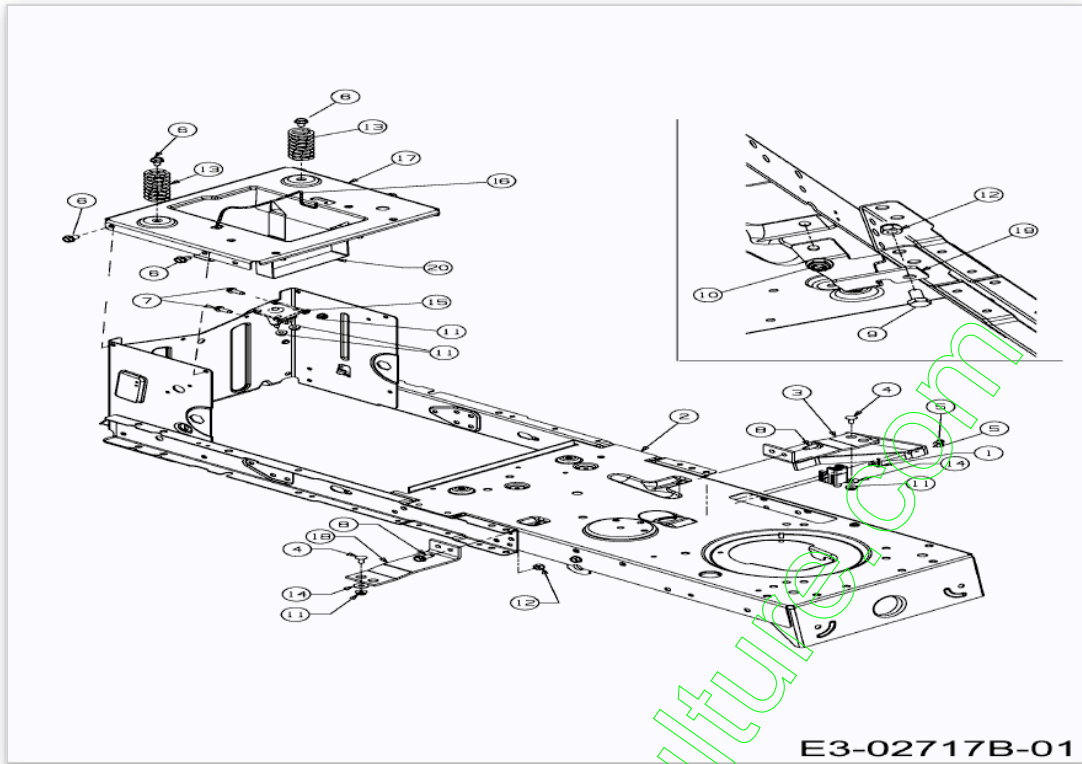
www.emc-motoculture.com



E3-02323B-01

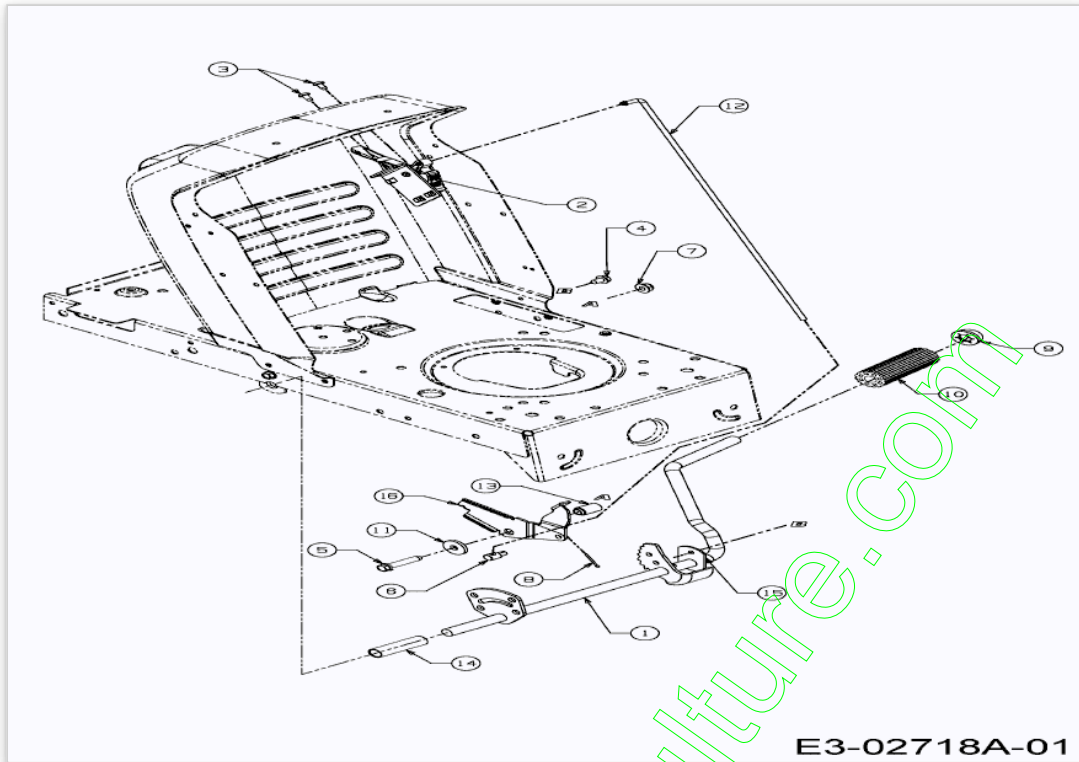
Position	Numéro de lapièce	#	Appellation I	Appellation II
1	710-04666	2	VIS HEXAGONALE	FINISH:MTD SPEC-100015
2	712-0271	2	ECROU 1/4-20"+ DISQUE DENTE	FINISH:MTD SPEC-100016 GR5
3	725-1751	1	BATTERIE SECHE 220CCA	12V 16Ah
4	725-2064	2	BIDON ACIDE 1 LITRE	725-2064

www.emc-motoculture.com



www.emc-motocultures.com

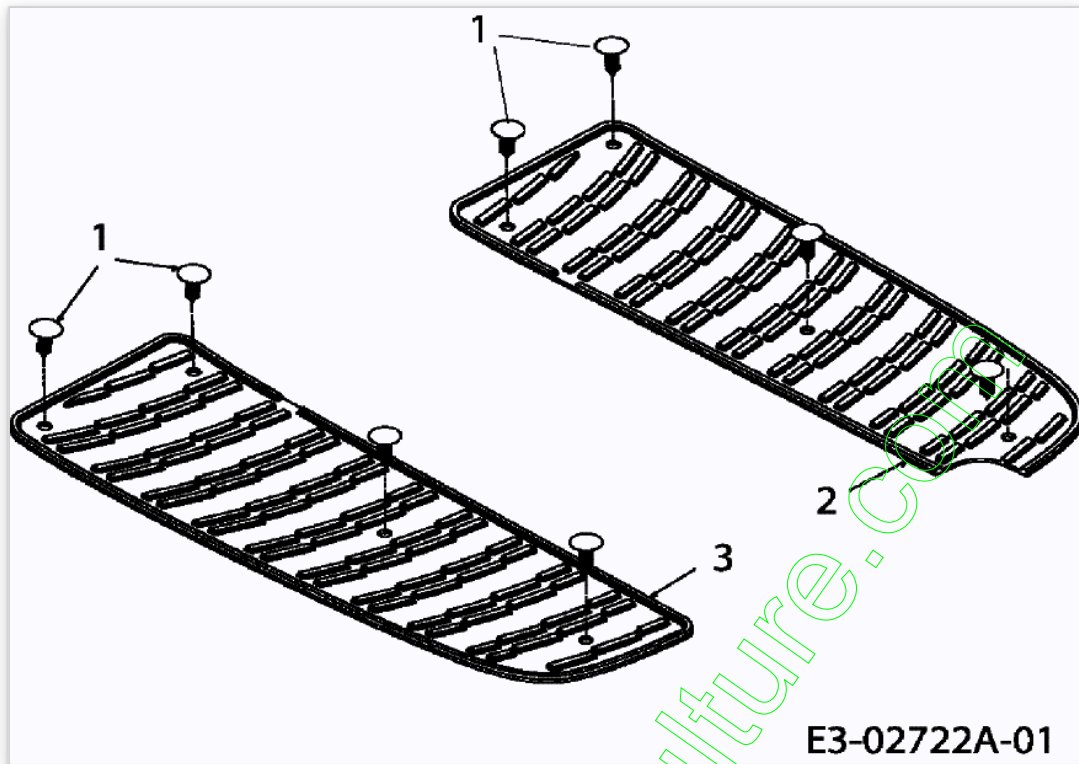
Position	Numéro de pièce	#	Appellation I	Appellation II
1	17962	1	PLAQUE DE SUPP. P. COMMUTATEUR	FINISH:WIE GESTANZT
2	683-04163B	1	RAHMEN VOLLST:LT-5	SCHWEISSTEIL: FINISH:LACKIERT
3	683-04195	1	STÜTZKONSOLE-LI.SITZWANNE LT5	SCHWEISSTEIL
4	710-0134	2	VIS j TαTE PLATE	FINISH:MTD SPEC-100015
5	710-0224	2	VIS PARK:#10-16:0.500:HXINDWSH	FINISH:MTD SPEC-100016 TYPE 1
6	710-0604A	6	VIS 5/16-18:0.625	FINISH:MTD SPEC-100016 TYPE 1
7	710-0642	2	VIS1/4-20:0.750	SPEC-100016 TYPE 1 910-0642
8	710-1260A	2	VIS TT:5/16-18:.750	FINISH:SPEC-100016 TYPE 1
9	710-3008	3	VIS 5/16-18:.75:GR5:STD	SPEC-701-01006 or.SPEC-100015
10	712-04063	2	ECROU HEX. AVEC FLANC	FINISH:MTD SPEC-100015
11	712-04064	4	ECROU HEXAGONAL	FINISH:SPEC-100015 912-04064
12	712-0429	3	ECROU	FINISH:SPEC-100015
13	732-04035	2	RESSORT DE SIEGE	FINISH:SPEC-100015
14	736-0173	2	RONDELLE 281DX 74ODX.063	FINISH:MTD SPEC-100015
15	736-0222	1	RONDELLE	FINISH:MTD SPEC-100016
16	747-04385	1	TIGE SUPPORT BATTERIE	FINISH:PLAIN
17	783-04548A	1	RAHMENBLECH SITZ LT-5	FINISH:LACKIERT
18	783-04637	1	STÜTZKONSOLE SITZWANNE LT5	FINISH:NONE
19	783-04753	1	STÜTZBLECH RAHMEN	FINISH:NONE
20	783-04869	1	HALTEBLECH BATTERIE	FINISH:LACKIERT



www.emc-motoculture.com

Position	Numéro de pièce	#	Appellation I	Appellation II
1	647-04132A	1	PEDAL VOLLST:TRANS:RR DIS LT-5	SCHWEISSTEIL:LACKIERT
2	683-04225	1	SCHALTHEBEL VOLLST:6- SPEED:LT5	
3	710-04483	2	VIS:TT:1/4- 20:.500:TRUSTRXI	FINISH:GELB SPEC-701-01002
4	710-0604A	1	VIS 5/16-18:0.625	FINISH:MTD SPEC-100016 TYPE 1
5	710-1008	1	VIS	FINISH:MTD SPEC-100016
6	711-0736	1	AXE	FINISH:MTD SPEC-100015
7	712-04065	1	ECROU HEXAGONAL	FINISH:SPEC-100015 912-04065
8	714-0111	1	GOUPILLE FENDUE 3/32:1.0"	FINISH:MTD SPEC-100015
9	726-0214	1	BOUCHON	FINISH: SCHWARZ
10	735-0239	1	CAOUTCHOUC/PEDALE 4;0 LG	FINISH: SCHWARZ
11	736-0247	1	RONDELLE 40 X 1.25X .157"	FINISH:MTD SPEC-100016
12	747-04430	1	TRINGLE	FINISH:701-01000 OR 701-010007
13	750-04465	1	ENTRETOISE	
14	750-0802	1	ENTRETOISE / .640IDX.760DX2.63	FINISH:KUNSTSTOFF SCHWARZ
15	783-04536	1	SUPPORT	FINISH:701-01001
16	783-04903	1	HALTEBLECH:SPEED:NO RMC	

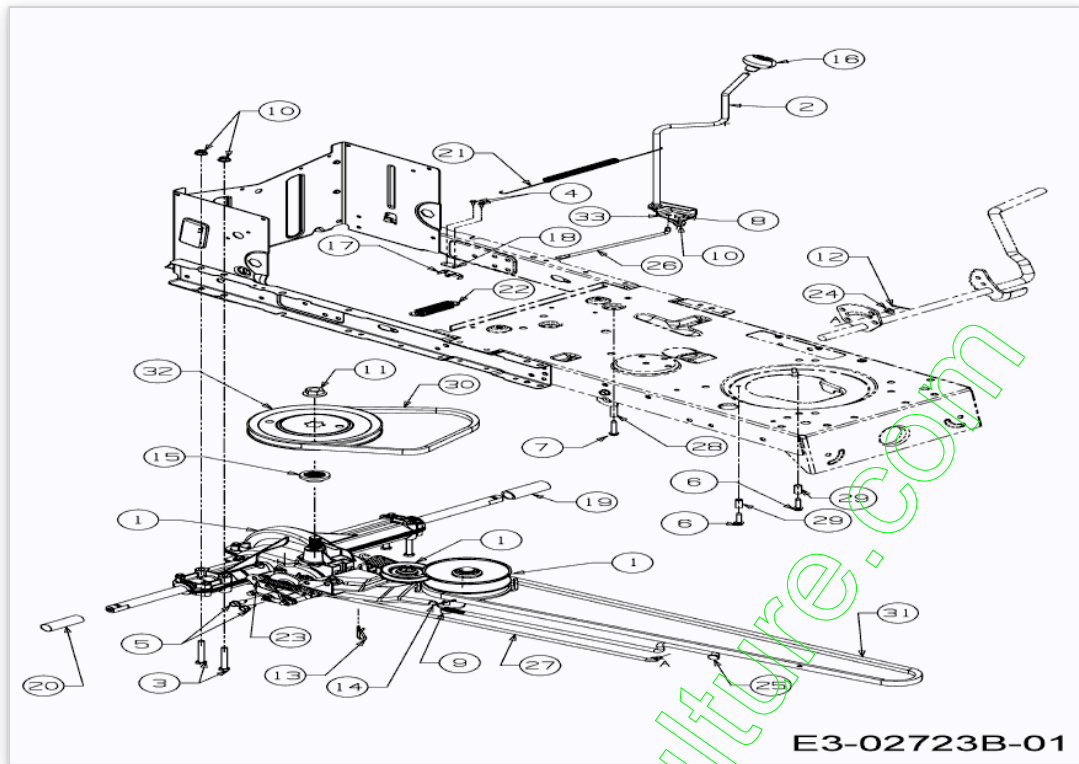
www.emc-motoculture.com



www.emc-motoculture.com

Position	Numéro de lapièce	#	Appellation I	Appellation II
1	726-3046	8	CLIP DE FIXATION:.250 DIA	FINISH:KUNSTSTOFF SCHWARZ
2	735-04047	1	MARCHE PIED GAUCHE	FINISH:SCHWARZ
3	735-04048	1	MARCHE PIED DROITE	FINISH:SCHWARZ

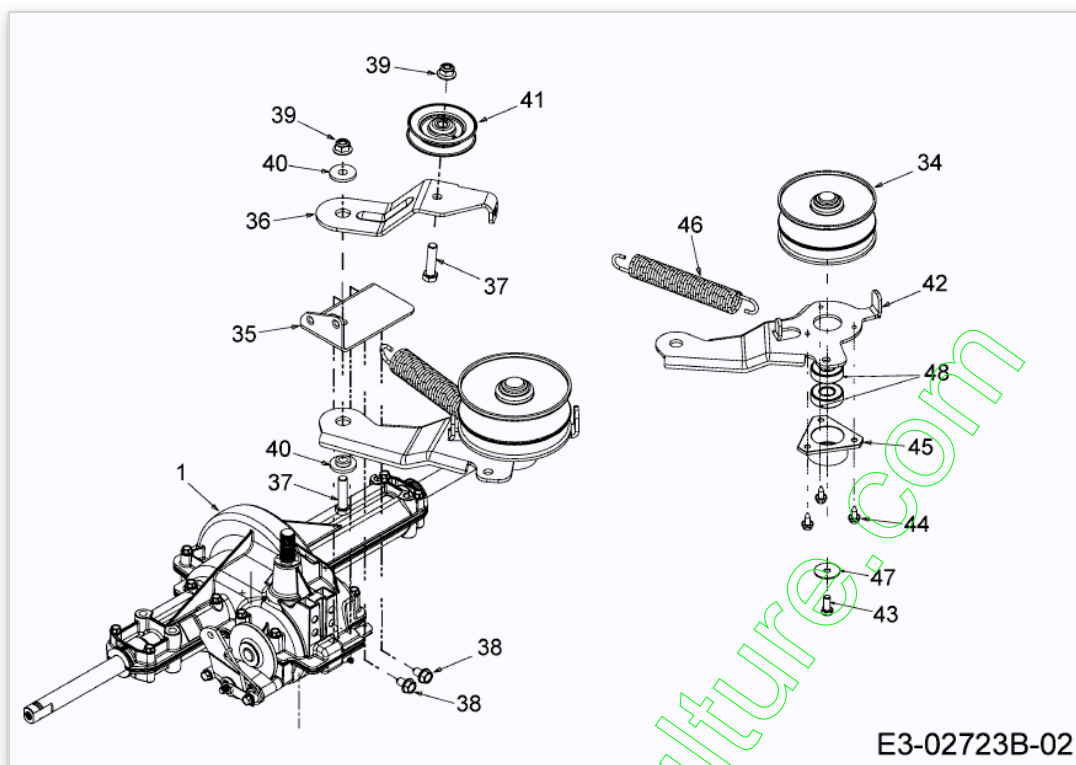
www.emc-motoculture.com



Position	Numéro de lapièce	#	Appellation I	Appellation II
1	618-04381	1	PONT COMPLET	
2	647-04035	1	LEVIER INVERSEUR	FINISH:701-01000
3	710-0176	4	VIS HEX.:5/16- 18:2.75:GR5:STD	(21.1441.82)FINISH:SPEC-100015
4	710-0227	2	VIS	FINISH:MTD SPEC-100016 TYPE 1
5	710-0604A	2	VIS 5/16-18:0.625	FINISH:MTD SPEC-100016 TYPE 1
6	710-0809	2	VIS HEX. TT:1/4- 20:1.250:HXIND	FINISH:MTD SPEC-100016 TYPE 1
7	710-1325	1	VIS HEXAGONALE	FINISH:SPEC-100016 TYPE 1
8	710-3008	1	VIS 5/16-18:.75:GR5:STD	SPEC-701-01006 or.SPEC-100015
9	711-04075A	1	EMBOUT	FINISH:MTD SPEC-100015
10	712-04063	5	ECROU HEX. AVEC FLANC	FINISH:MTD SPEC-100015
11	712-0700	1	ECROU HEXAGONAL	SPEC-100015+WAX 912-0700
12	714-0111	1	GOUPILLE FENDUE 3/32:1.0"	FINISH:MTD SPEC-100015
13	714-0209	1	GOUPILLE FENDUE	FINISH:SPEC 701-01006 914-0209
14	714-0470	1	EPINGLE EX AF-43010	FINISH:SPEC-100015 470 32 32
15	718-0758A	1	ENTRETOISE DE POULIE	VERZAHNUNG 918-0758A
16	720-04028	1	POIGNEE INVERSEUR	FINISH:SCHWARZ
17	725-1644	1	INTERRUPTEUR DE SÛCURITÛ	FINISH:MTD SPEC-100015
18	726-0320	1	PLAQUE D'ISOLATION	FINISH:NATUR ODER SCHWARZ
19	731-04602	1	ENTRETOISE	FINISH:PP SCHWARZ
20	731-04604	1	ENTRETOISE	FINISH:PP SCHWARZ
21	732-04276A	1	RESSORT	FINISH:MTD SPEC-701-01006
22	732-04306	1	RESSORT	FINISH:MTD STD 701-01006
23	732-0716C	1	RESSORT	FINISH:MTD STD 701-01006
24	736-0264	1	RONDELLE: .330 x.630 x.0635	FINISH:SPEC-100015 936-0264
25	747-04265	1	TRINGLE TENDEUR VARIATEUR	FINISH:701-01000
26	747-04277	1	TIGE	FINISH:SIEHE ZG
27	747-04287	1	TIGE DE FREIN	FINISH:701-01000
28	750-04456	1	ENTRETOISE	FINISH:MTD SPEC-100015
29	750-0566A	2	ENTRETOISE	FINISH:MTD SPEC-100015
30	754-0241A	1	COURROIE VARIATEUR/BOITE	FINISH:SIEHE ZG. 954-0241A

Position	Numéro de lapièce	#	Appellation I	Appellation II
31	754-04001A	1	COURROIE TRANSMISSION	954-04001A
32	756-04002	1	POULIE DE PONT	FINISH:SIEHE ZG. 956-04002
33	783-04595	1	SUPPORT DE LEVIER	FINISH:701-01000

www.emc-motoculture.com

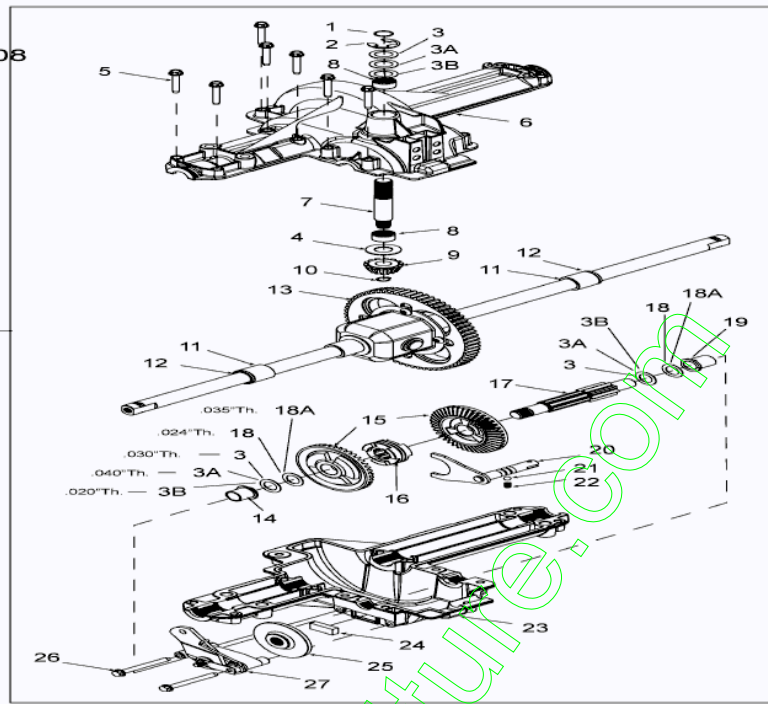


www.emc-motoculture.com

Position	Numéro de lapièce	#	Appellation I	Appellation II
1	618-04034	1	TRANSMISSION 1 VITESSE	618-04034 / 918-04034
34	656-04015	1	POULIE DE VARIATEUR	4.75 OD
35	683-04176A	1	SUPPORT	E-COAT SCHWARZ
36	683-04207	1	SUPPORT TENDEUR	FINISH:E-COAT:SCHWARZ
37	710-0520	1	VIS HEX.:3/8- 16:1.50:GR5:STD	FINISH:SPEC-100015
38	710-0604A	2	VIS 5/16-18:0.625	FINISH:MTD SPEC-100016 TYPE 1
39	712-04065	2	ECROU HEXAGONAL	FINISH:SPEC-100015 912-04065
40	738-0347	2	RONDELLE j EMB. .625IDx.169	FINISH:
41	756-04213	1	POULIE TENDEUR	SCHWARZ LACKIERT ODER VERZINKT
42	683-04206	1	SUPPORT VARIATEUR LT-5	E-COAT SPEC-000096:SCHWARZ LA.
43	710-0627	1	VIS HEX. 5/16-24:.750 GR5:LOCK	FINISH:MTD SPEC-100015
44	710-1652	3	VIS HEX. TT:1/4- 20:.625:HXINDW	FINISH:MTD-SPEC-100016 TYPE 1
45	718-04012	1	CAGE DE PALIER	FINISH:ROSTSCHUTZ
46	732-04076A	1	RESSORT	FINISH:701-01000
47	736-0362	1	RONDELLE 320ID X 1.25 ODX .0	FINISH:SPEC-100016
48	741-0600	2	ROULEMENT j BILLES	741-0600/941-0600

bis 15/03/2008
til 03/15/2008
jusqu'au 15/03/2008

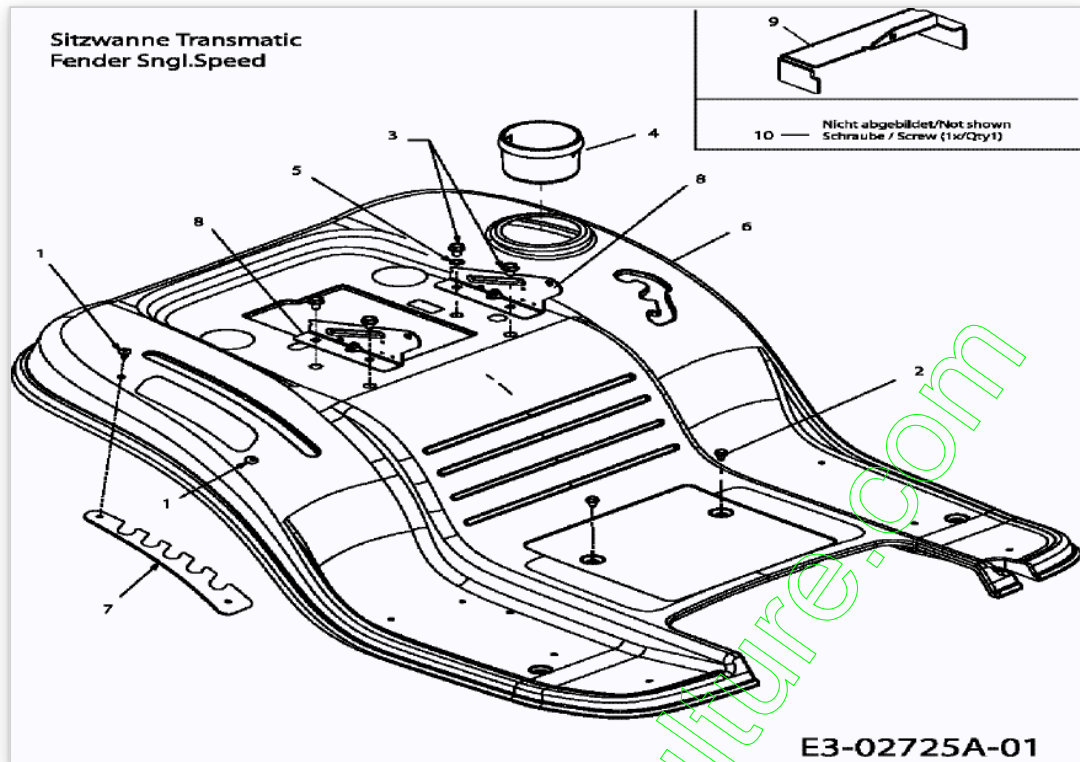
28



E3-02743A-01

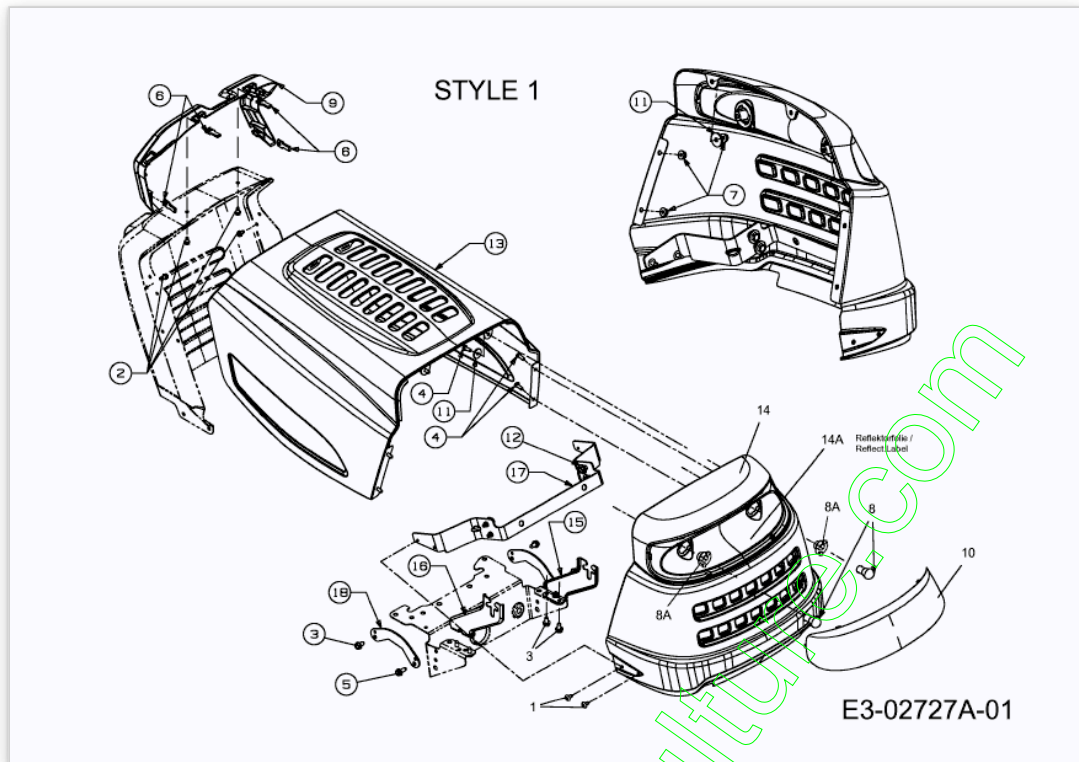
www.emc-motoculture.com

Position	Numéro de lapièce	#	Appellation I	Appellation II
1	732-0614	1	CIRCLIPS	FINISH:ZINC PHOSPHATE
2	716-0231	1	CIRCLIPS	FINISH:SPEC-100016
3	736-0336	x	RONDELLE 5/8X1.00X.030	FINISH:MTD SPEC-100016
3A	736-0337	x	RONDELLE 5/8 IDX1.0 ODX.040	MTD STD 701-01001 936-0337
3B	736-0349	x	RONDELLE 5/8 IDX10 OD X .020	FINISH:SIEHE ZG.
4	736-0335	1	RONDELLE 1 5/8XA1.25"X.06	FINISH:SIEHE ZG.
5	710-1325	13	VIS HEXAGONALE	FINISH:SPEC-100016 TYPE 1
6	719-04017	1	PARTIE SUPÛRIEURE DE CARTER	919-04017 RB 918-04168
7	711-1109	1	ARBRE D'ADMISSION	FINISH:SIEHE ZG.
8	741-0335	2	ROULEMENT 1,5/8X1/2" LG	FINISH:SIEHE ZG. 941-0335
9	717-1464	1	PIGNON CONIQUE 14 DENTS	FINISH:HITZEBEHANDELT
10	716-0108	1	CIRCLIPS 7/16"	FINISH:PHOSPATIERT 916-0108
11	741-0340	2	DOUILLE	ÖLIMRÄGNIERT EXXON 941-0340
12	721-0338	2	JOINT	.75 x 1.00 x .125:FINISH STD
13	618-04041	1	DIFFÛRENTIEL	618-04041
14	741-0336	1	BAGUE	FINISH:SIEHE ZG. 941-0336
15	717-04056	2	PIGNON 42 DENTS	FINISH:ÖL GEDIPPT
16	718-04045	1	PIGNON BALADEUR	FINISH:SIEHE ZG.
17	711-04134	1		
18	736-0495	x	RONDELLE	FINISH:SIEHE ZG. 936-0495
18A	736-0494	x	RONDELLE	FINISH:MTD SPEC-100016
19	741-0337	1	BAGUE	941-0337
20	611-0011	1	FOURCHETTE	FINISH: 911-0011
21	741-0862	1	BILLE	FINISH: SIEHE ZG.
22	732-0863	1	RESSORT ; PRESSION 225X.50"	FINISH: PHOS & OIL 932-0863
23	719-04018	1	CARTER INFERIEUR	719-04018 / 919-04018
24	717-0678	1	PLAQUETTE DE FREIN	FINISH:
25	761-0202	1	DISQUE DE FREIN	FINISH:ÖL UND FETTFREI
26	710-1206	2	VIS HEX. TT:1/4-20:2.375	FINISH:MTD SPEC-100016 TYPE 1
27	661-0001	1	FREIN	FINISH: 961-0001
28	618-04034	1	TRANSMISSION 1 VITESSE	618-04034 / 918-04034

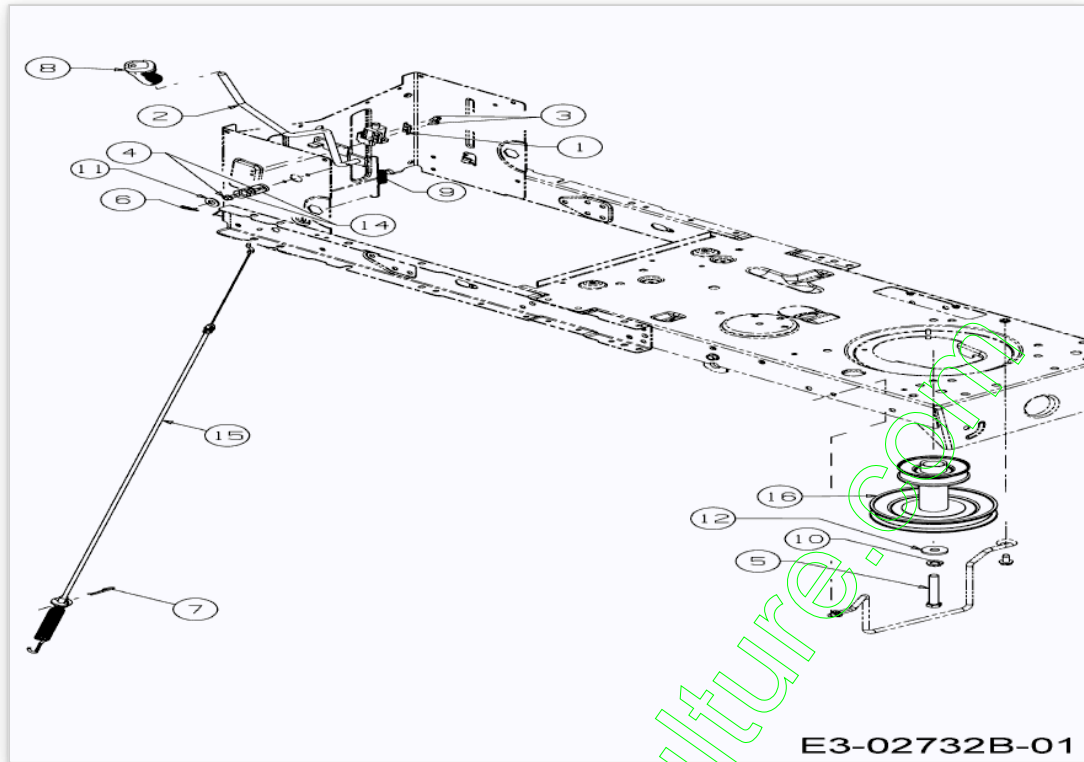


Position	Numéro de lapièce	#	Appellation I	Appellation II
1	710-04483	1	VIS:TT:1/4- 20:.500:TRUSTRXI	FINISH:GELB SPEC-701-01002
2	710-0599	2	VIS A SIX PANS CREUX	FINISH:MTD SPEC-101617
3	710-1611B	4	VIS:TT:5/16- 18:0.750:PANTRXI	FINISH:MTD SPEC-100015
4	731-04591A	1	PORTE GOBELET	FINISH:KUNSTSTOFF SCHWARZ
5	736-0607	1	RONDELLE	FINISH:MTD SPEC-100016
6	783-04587	1	JUPE ARRIERE	
7	783-04732	1	VERSTELLPLATTE DECK LT-5	LACKIERT
8	783-1489C	2	SUPPORT:SIËGE	FINISH:LACKIERT
9	783-04877	1	783-06279	FINISH:LACKIERT
10	710-0224	1	VIS PARK:#10- 16:0.500:HXINDWSH	FINISH:MTD SPEC-100016 TYPE 1

www.emc-motoculture.com



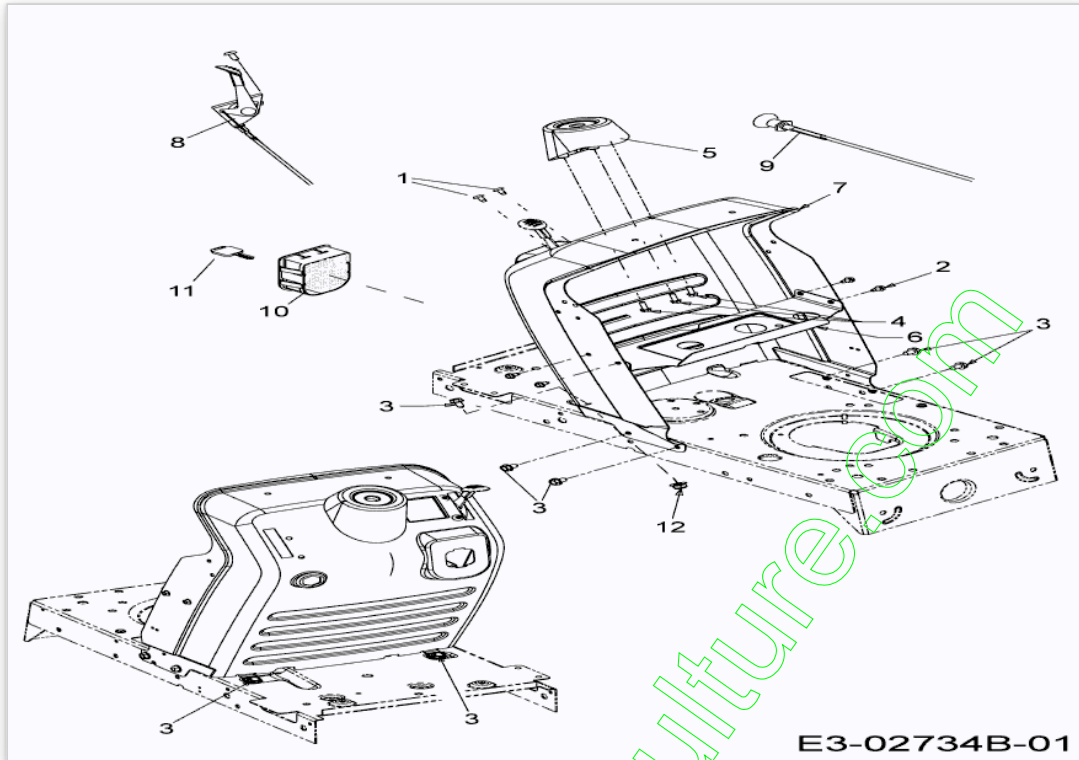
Position	Numéro de pièce	#	Appellation I	Appellation II
1	710-0599	4	VIS A SIX PANS CREUX	FINISH:MTD SPEC-101617
2	710-0599	4	VIS A SIX PANS CREUX	FINISH:MTD SPEC-101617
3	710-0604A	6	VIS 5/16-18:0.625	FINISH:MTD SPEC-100016 TYPE 1
4	710-0751	6	VIS HEX.: 1/4-20:.620:GR5:STD	FINISH:SPEC-100015
5	710-1260A	2	VIS TT:5/16-18:.750	FINISH:SPEC-100016 TYPE 1
6	712-0185	4	ECROU EN TOLE	1/4-20:SPD U-TYPE
7	712-04064	6	ECROU HEXAGONAL	FINISH:SPEC-100015 912-04064
8	725-0963	2	AMPOULE ELECTRIQUE	FINISH:
8A	725-1649	2	DOUILLE DE LAMPE: 1/4 ROTATION	GRAU KUNSTSTOFF
9	731-04947	1	ADAPTATEUR TABLEAU DE BORD	1 STYLE FINISH:SCHWARZ
10	731-04949	1	OPTIQUE	FINISH:KLAR
11	736-0176	4	RONDELLE PLATE .25x.93X.125"	FINISH:MTD SPEC-100015
12	738-04091	4	VIS j ÜPA. .43 x.29:TT:5/16-18	FINISH:701-01002
13	783-04551	1	CAPOT MOTEUR	FINISH:LACKIERT
14	783-04552	1	CALANDRE	FINISH:LACKIERT
14A	777X41984	1	REFLECTEUR	FINISH:
15	783-04577	1	SUPPORT GAUCHE	FINISH:LACKIERT
16	783-04578	1	SUPPORT DROITE	FINISH:LACKIERT
17	783-04621	1	SUPPORT CALANDRE	FINISH:LACKIERT
18	783-05027	2	FRONTBLECH:GEBOGEN: 1/5ST.:LT5	FINISH:LACKIERT



www.emc-motoculture.com

Position	Numéro de lapièce	#	Appellation I	Appellation II
1	17962	1	PLAQUE DE SUPP. P. COMMUTATEUR	FINISH:WIE GESTANZT
2	647-04096	1	EINSCHALTSTANGE VST:PTO:LT-5	SCHWEISSTEIL FINISH:LACKIERT
3	738-04237	2	VIS	FINISH:701-01002
4	710-0599	2	VIS A SIX PANS CREUX	FINISH:MTD SPEC-101617
5	710-3157A	1	VIS HEX HHCS:7/16- 20:3.25GR5	LOCK FINISH:701-01000
6	714-0104	1	GOUPILLE	FINISH:PHOS AND OIL
7	714-0145	1	GOUPILLE	FINISH:SPEC-701-01006
8	720-04049	1	POIGNEE PLASTIQUE	FINISH:SIEHE ZG.
9	732-04276	1	RESSORT	FINISH:PHOS & OIL
10	736-0171	1	RONDELLE GROWER	FINISH:MTD SPEC-100016
11	736-0300	1	RONDELLE	FINISH:MTD SPEC-100015
12	736-0322	1	RONDELLE .450 X 1.250 X .164	FINISH:SPEC-100016 936-0322
14	741-04119	2	GUIDE PLASTIQUE	FINISH SCHWARZ
15	746-04173B	1	CABLE EMBRAYAGE	
16	756-04196	1	POULIE MOTEUR	3.39 X 6.12:FINISH SIEHE ZG.

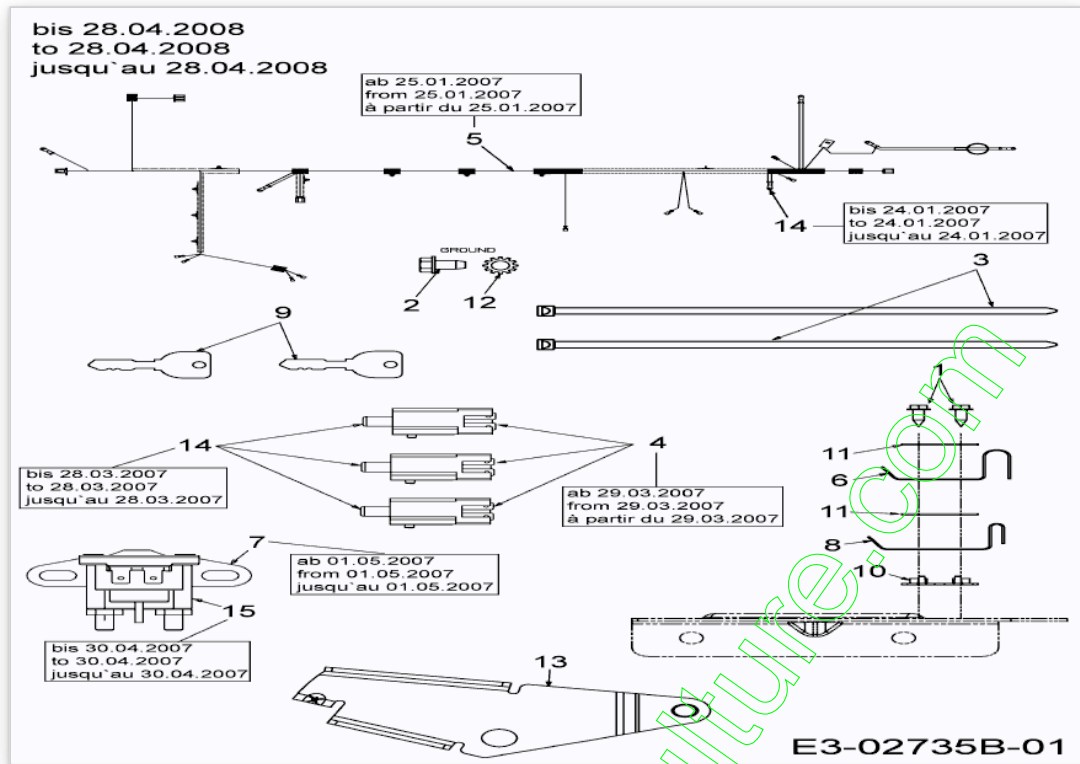
www.emc-motoculture.com



www.emc-motoculture.com

Position	Numéro de lapièce	#	Appellation I	Appellation II
1	710-04483	2	VIS:TT:1/4- 20:.500:TRUSTRXI	FINISH:GELB SPEC-701-01002
2	710-0599	4	VIS A SIX PANS CREUX	FINISH:MTD SPEC-101617
3	710-0604A	6	VIS 5/16-18:0.625	FINISH:MTD SPEC-100016 TYPE 1
4	710-0895	3	VIS A SIX PANS CREUX	FINISH:MTD SPEC-100016 TYPE 1
5	731-04945	1	SUPPORT VOLANT	FINISH:SIEHE ZG.
6	783-04584	1	SUPPORT	
7	783-04873	1	TABLEAU DE BORD	FINISH:LACKIERT
8	746-04358	1	CABLE ACCELERATEUR	746-04358
9	746-1089	1	CABLE STARTER	29.0" LG x 1.50 EXT
10	725-1741	1	CONTACTEUR A CLE	FINISH: 925-1741
11	725-1744	1	CLÜ DE CONTACT:DELTA	725-1744
12	712-04063	1	ECROU HEX. AVEC FLANC	FINISH:MTD SPEC-100015

www.emc-motocultures.com



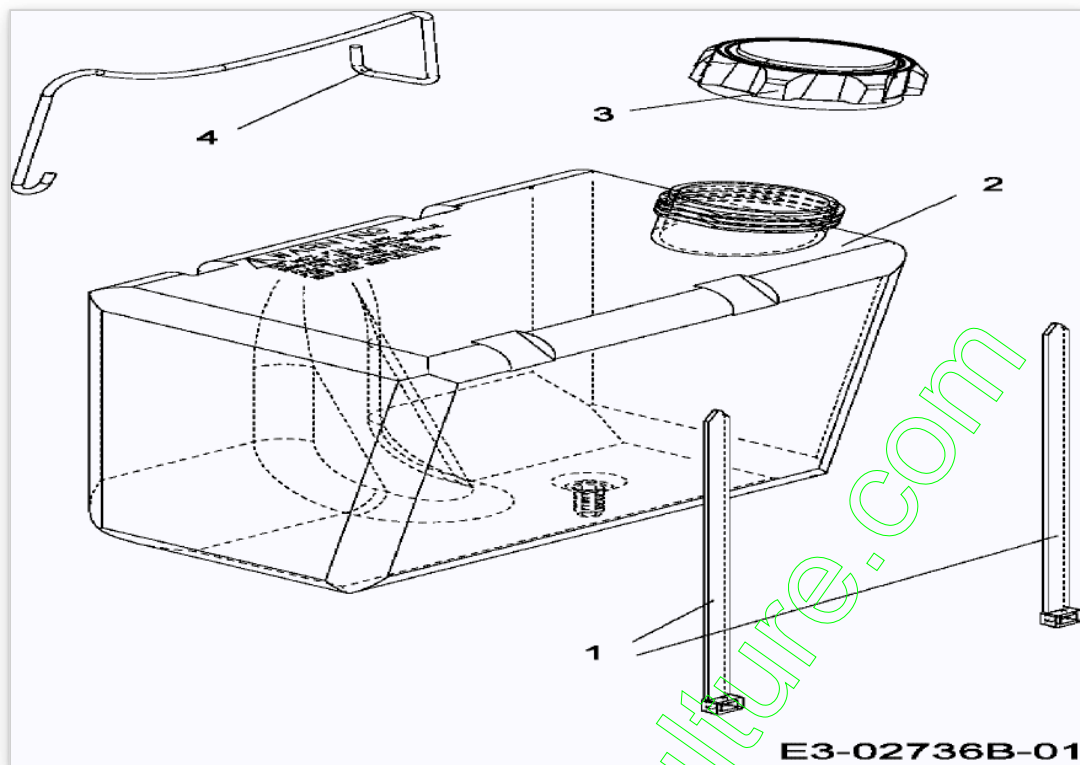
www.emc-motoculture.com

Position	Numéro de lapièce	#	Appellation I	Appellation II
1	710-0227	2	VIS	FINISH:MTD SPEC-100016 TYPE 1
2	710-0599	1	VIS A SIX PANS CREUX	FINISH:MTD SPEC-101617
3	725-0157	2	COLLIER DE SERRAGE3/16X0.5X7.4	MATERIAL:NYLON-SCHWARZ
4	725-04363	3	SECURITE EMBRAYAGE	FINISH:SIEHE ZG.
5	725-04433	1	FAISCEAU COMPLET LT5	725-04433
6	725-1303	1	RESSORT DE SURETE SIEGE	SI.-SCHALTER SITZ:SPEC-100015
7	725-04439	1	COMMUTATEUR MAGNÛTIQUE	12V:100 AMP
8	725-1439	1	RESSORT SURETE DE SIEGE	SI.-SCHALTER SITZ:SPEC-100015
9	725-1744	2	CLÛ DE CONTACT:DELTA	725-1744
10	726-0278	1	PLAQUE D'ISOLATION	FINISH:NATUR ODER SCHWARZ
11	726-0279	2	PLAQUE D'ISOLATION	FINISH:NATUR ODER SCHWARZ
12	736-0222	1	RONDELLE	FINISH:MTD SPEC-100016
13	783-04903	1	HALTEBLECH:SPEED:NO RMC	
14	725-04039	3	SECURITE	FINISH:GRAY/BLACK 925-04039
15	725-1426A	1	RELAIS DE DEMARRAGE	12V:100 AMP
16	725-04361	1	FAICSEAU CPL	725-04361

www.emc-motoculture.com

Position	Numéro de lapièce	#	Appellation I	Appellation II
5	725-04433	1	FAISCEAU COMPLET LT5	725-04433
16	725-04361	1	FAICSEAU CPL	725-04361

www.emc-motoculture.com



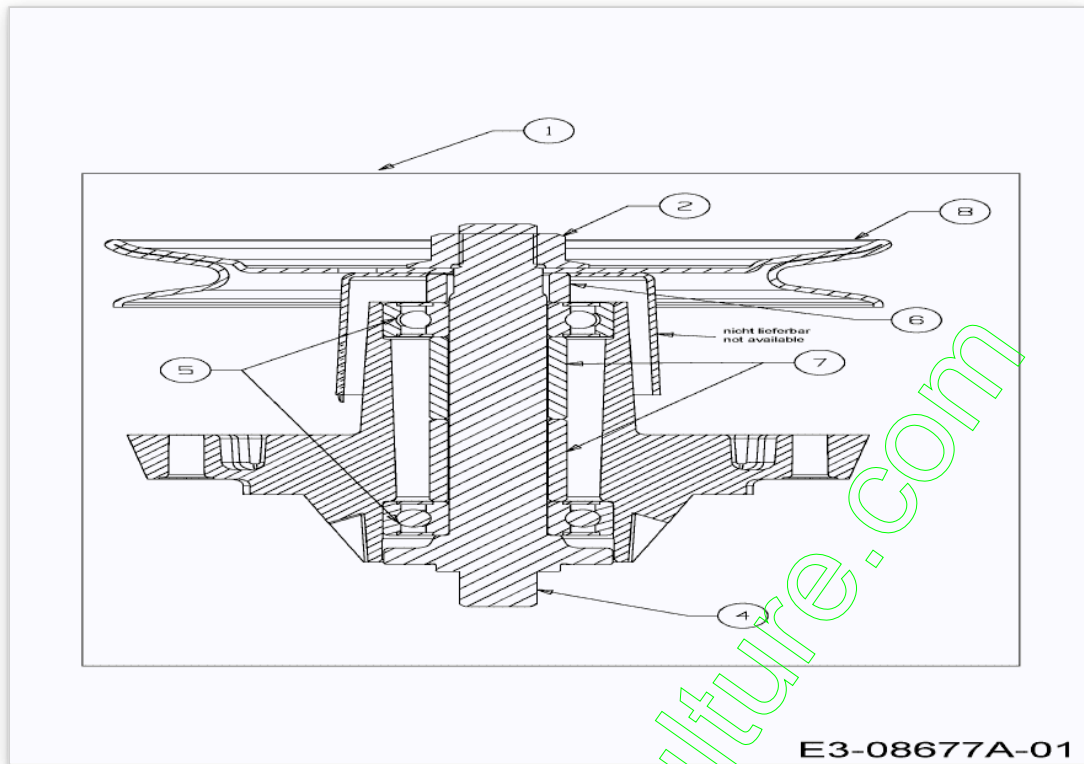
Position	Numéro de lapièce	#	Appellation I	Appellation II
1	726-0209	2	COLLIER	FINISH: SCHWARZ
2	751-0553	1	RESERVOIR 5 L ENV.	FINISH: NATUR SIEHE ZG.
3	751-0603	1	BOUCHON RESERVOIR ESSENCE	FINISH: SCHWARZ
4	747-04660	1	FINISH: LACKIERT	FINISH: LACKIERT

www.emc-motoculture.com

Position	Numéro de lapièce	#	Appellation I	Appellation II
1	618-04628	2	MESSERSPINDEL VOLLST:6.3 DIA	MIT LAGERABDECKUNG
1A	618-04456	2	PALIER DE LAME COMPLET	VOLLST.
2	683-04138B	1	983-04138B	NIET-TEIL
3	683-04162A	1	CARTER DE COUPE 107 CM ROUGE	SCHWEISSTEIL FINISH:LACKIERT
4	683-04167	1	BRAKE ASM: DECK: LT5	
5	683-04228	1	DECKHALTERUNG VOLLST.	SCHWEISSTEIL FINISH:LACKIERT
6	710-0347	1	VIS HEX. 3/8-16:1.75:GR5:STD	FINISH:MTD SPEC-100015
7	710-0528	1	VIS HEX. 5/16-18:1.25:GR5:STD	FINISH:SPEC-100015 910-0528
8	710-0604A	7	VIS 5/16-18:0.625	FINISH:MTD SPEC-100016 TYPE 1
9	710-0778	1	VIS HEX. TT:1/4-20:1.500	FINISH:MTD SPEC-100016 TYPE 1
10	710-1260A	9	VIS TT:5/16-18:.750	FINISH:SPEC-100016 TYPE 1
11	710-3008	1	VIS 5/16-18:.75:GR5:STD	SPEC-701-01006 or.SPEC-100015
12	710-3015	2	VIS:1/4-20:.75:GR5:STD	FINISH:MTD SPEC-100015
13	710-3085	1	VIS	FINISH:MTD SPEC-100015
14	711-1000	4	GUIDE COURROIE 25 X 3.0	FINISH: 911-1000
15	712-0206	1	ECROU HEX. 1/2-13:GR.5	FINISH:MTD SPEC-100015
16	712-0229	1	ECROU	FINISH:SPEC-100016
17	712-04063	1	ECROU HEX. AVEC FLANC	FINISH:MTD SPEC-100015
18	712-04064	4	ECROU HEXAGONAL	FINISH:SPEC-100015 912-04064
19	712-04065	4	ECROU HEXAGONAL	FINISH:SPEC-100015 912-04065
20	712-0417A	2	ÜCROU HEX. AV. FLANC: 5/8-18	FINISH:MTD STD 701-01000
21	712-0641	1	ECROU HEX. M16-1.5 DIN 936	FINISH:SPEC-100015 24.1424.31
22	712-3006	2	ECROU HEXAGONAL	FINISH:SPEC-100015
23	712-3083	1	ECROU HEX. 1/2-13:GRB:NYLON	FINISH:MTD SPEC-100015
24	714-0104	1	GOUPILLE	FINISH:PHOS AND OIL
25	717-04074	1	PIGNON HAUTEUR PLATEAU	PHOS & SPEC-100015 917-04074
26	726-0233	2	RONDELLE	MECHANISCH KLAR VERZINKT
27	731-05657	1	COUVERCLE	FINISH:SCHWARZ E-TEIL-SET
28	732-04280B	1	RESSORT .75 OD X 6.375LG	FINISH:MTD STD 701-01006
29	732-04287	1	RESSORT	SPEC 701-01006 OR SPEC-100015
30	734-0973	2	ROULETTE DE PLATEAU	FINISH:KUNSTSTOFF SCHWARZ
31	736-0119	1	RONDELLE	FINISH:MTD SPEC-100016
32	736-0187	1	RONDELLE .64X1.24X.06	FINISH:MTD SPEC-100016
33	736-0225	1	RONDELLE	FINISH:MTD SPEC-100016
34	736-0270	2	RONDELLE GROWER	FINISH:MTD SPEC-100016
35	736-0300	3	RONDELLE	FINISH:MTD SPEC-100015
36	738-0373	2	VIS A EPAULE .496x1.525:3/8-16	FINISH:MTD SPEC-100015
37	738-04146	1	VIS BOUCHON	DECKWASCHDÜSE:SPEC-100015
38	738-04162A	1	ENTRETOISE .8840 x .190	FINISH:IN ÖL GETAUCHT
39	738-04166	1	ENTRETOISE .5000 X .1475	FINISH: IN ÖL GETAUCHT

Position	Numéro de lapièce	#	Appellation I	Appellation II
40	742-0616A	2	LAME 21.23" LG: HIGH LIFT	742-0616A637 942-0616A *
41	747-04269A	1	TRINGLE DE RELEVAGE AVANT	FINISH:701-01000
42	747-04307	1	GUIDE COURROIE 42 POUCES	FINISH:SIEHE ZG.
43	747-04379A	1	TIGE DE FREIN	FINISH:SPEC-100015
44	748-04069	1	RONDELLE	FINISH:701-01001 LT-5/NX15
45	750-04446	1	DOUILLE 3/8 ID X.68 OD X 1.46	FINISH:EINGEÖLT
46	750-0566A	1	ENTRETOISE	FINISH:MTD SPEC-100015
47	754-04060B	1	COURROIE DE COUPE 107 CM	954-04060B
48	756-04129	2	POULIE TENDEUR	FINISH:
50	783-04740	1	FÜHRUNGSBL:BOWDENZUG:DECKBETÄT	FINISH:LACKIERT
51	783-1025	1	PLAQUE ACCROCHE DEFLECTEUR	FINISH:VERZINKT

www.emc-motoculture.com

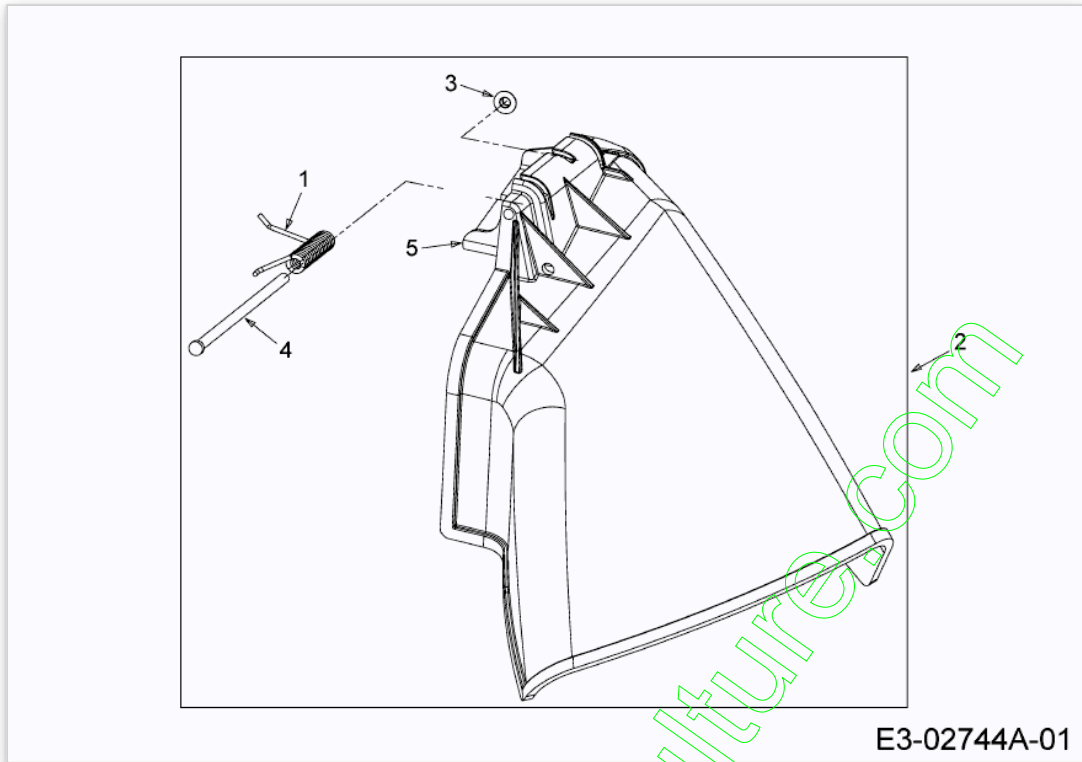


E3-08677A-01

www.emc-motoculture.com

Position	Numéro de lapièce	#	Appellation I	Appellation II
1	618-04628	1	MESSERSPINDEL VOLLST:6.3 DIA	MIT LAGERABDECKUNG
2	712-0417A	1	ÜCROU HEX. AV. FLANC: 5/8-18	FINISH:MTD STD 701-01000
4	738-04241	1	AXE DE LAME	FINISH:GEÖLT
5	741-0919	2	ROULEMENT ; BILLES	FINISH:SIEHE SPEC.
6	750-04739	1	DOUILLE	FINISH:GEÖLT
7	750-1000	2	ENTRETOISE: .80x1.10x1.330	FINISH:GEÖLT
8	756-1227	1	POULIE DE PALIER DE LAME	FINISH:SIEHE ZG.

www.emc-motoculture.com

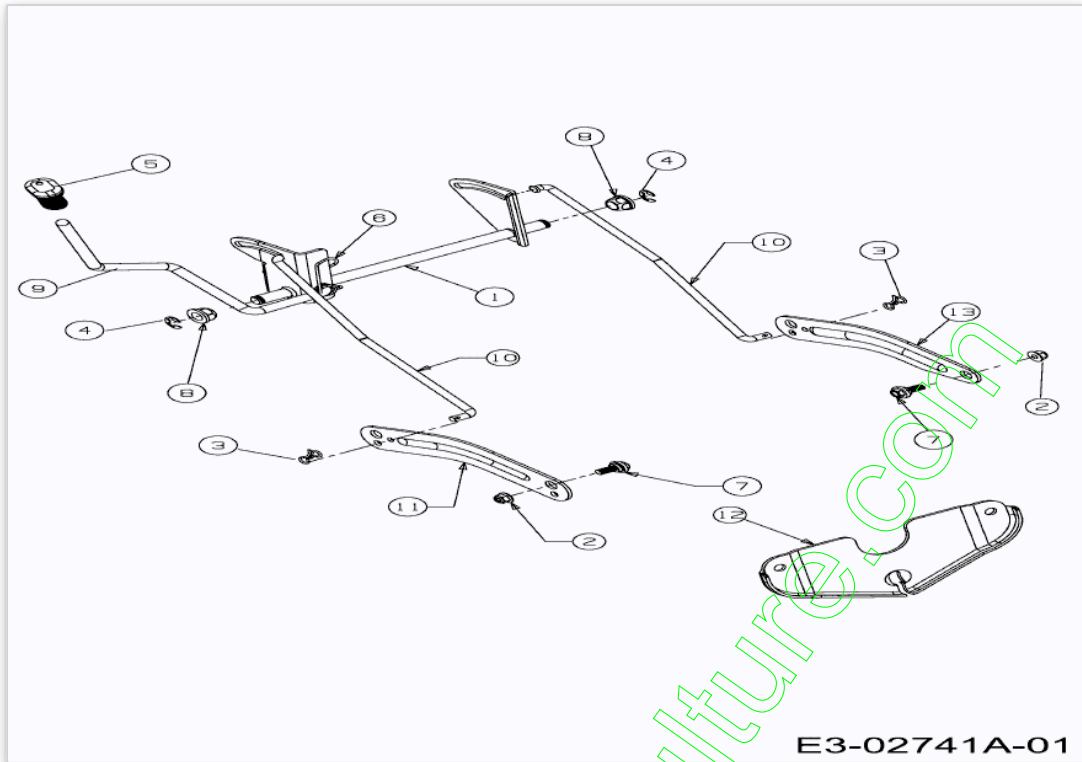


E3-02744A-01

www.emc-motoculture.com

Position	Numéro de lapièce	#	Appellation I	Appellation II
1	732-0602A	1	RESSORT	FINISH:MTD STD 701-01000
2	631-0220	1	DEFLECTEUR EJECTION LATERALE	631-0220/931-0220
3	726-0106	1	COUVERCLE 1/4 "	FINISH:MTD SPEC-100016
4	711-0792	1	GOUJON	MTD SPEC-100015 911-0792
5	703-1693A	1	SUPPORT DE DEFLECTEUR	FINISH:BLAU CHROMATIERT *

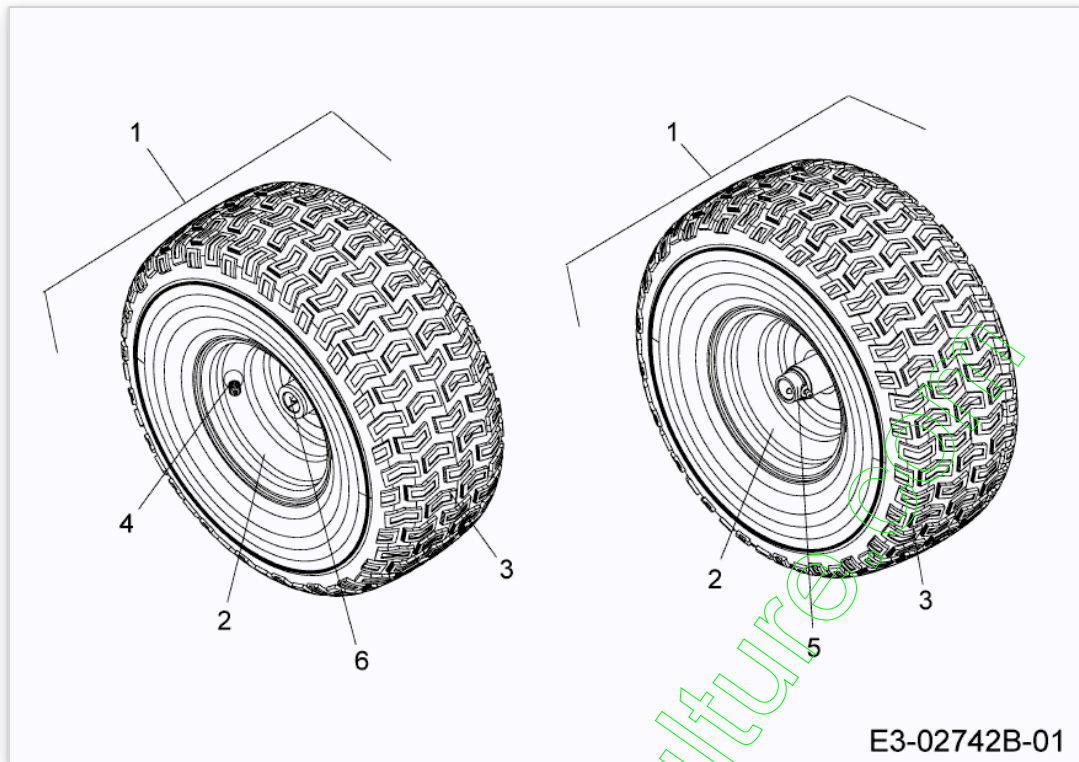
www.emc-motoculture.com



www.emc-motoculture.com

Position	Numéro de lapièce	#	Appellation I	Appellation II
1	683-04155637	1	ARBRE DE RELEVAGE	SCHWARZ LACKIERT
2	712-04065	2	ECROU HEXAGONAL	FINISH:SPEC-100015 912-04065
3	714-04043	2	GOUPILLE	FINISH:VERZINKT
4	716-0106A	2	CIRCLIPS	FINISH:PHOSPHATIERT
5	720-0311	1	POIGNÛE LEVIER COUPE : 1/2	FARBE:SCHWARZ VINYL
6	732-04225	1	RESSORT	FINISH:MTD STD 701-01006
7	738-04130	2	VIS .625X.175:3/8-16	FINISH:701-01002
8	741-0225	2	BAGUE HEXAGONALE TEFLON 6 PANS	FINISH:KUNSTSTOFF SCHWARZ
9	747-04282	1	LEVIER DE RELEVAGE :LT- 5	FINISH:SPEC-100015
10	747-04393	2	TRINGLE DE RELEVAGE	FINISH:MTD SPEC-100015
11	783-04494637	1	BRAS DE RELEVAGE PLATEAU DROIT	SCHWARZ LACKIERT
12	783-04568637	1	PLAQUE AVANT	SCHWARZ LACKIERT
13	783-04711637	1	LEVIER RELEVAGE PLATEAU	SCHWARZ LACKIERT

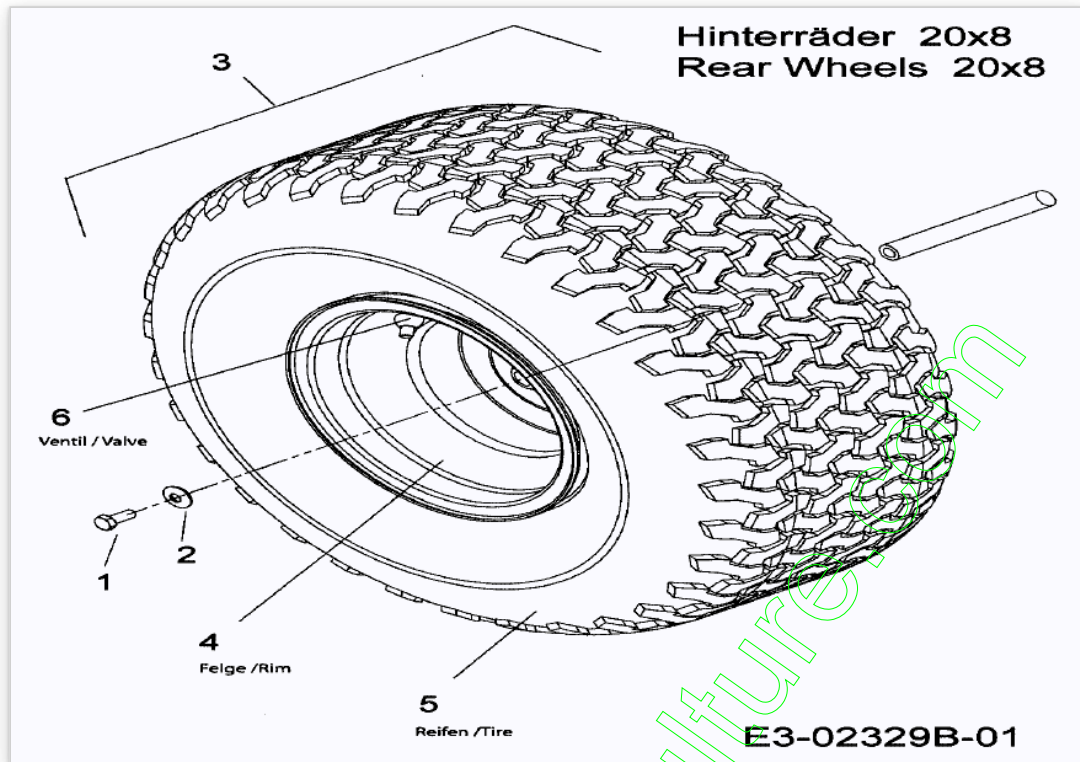
www.emc-motoculture.com



E3-02742B-01

Position	Numéro de lapièce	#	Appellation I	Appellation II
1	634-04229-G	2	ROUE CPL 15X600X6 GRIS	GLEITLAGER OYSTER GRAY
2	634-04081	2	JANTE CPLT	GLEITLAGER SCHWEIßTEIL
3	734-0864	2	PNEU 15*600*6	Block TURF PRO
4	734-0255	2	VALVE:PNEU	TR 412-P / 32.6mm / 934-0255
5	741-0990B	2	BAGUE DE ROUE AVEC GRAISSEUR	m.SCHMIERNIPPEL:FINISH SCHWARZ
6	741-0516B	2	BAGUE DE ROUE .760x1.00x1.20	FINISH:SCHWARZ

www.emc-motoculture.com



Position	Numéro de lapièce	#	Appellation I	Appellation II
1	710-0627	2	VIS HEX. 5/16-24:.750 GR5:LOCK	FINISH:MTD SPEC-100015
2	736-0242	2	RONDELLE CONIQUE.340X.872X.060	FINISH:MTD SPEC-100016
3	734-1675662	2	ROUE CPL. 20X8.00-8	FINISH:OYSTER GRAY 788-0662
4	634-0070	2	JANTE	FINISH:788-0499/674/0662
5	734-1596	2	PNEU 20 X 8.00.8 ST	BLOCK TURF PRO: RND SHL
6	734-0255	2	VALVE:PNEU	TR 412-P / 32.6mm / 934-0255

www.emc-motoculture.com